

Thriving Through Barriers: How Real World Experience Transforms Youth Employment and Education



Agenda:

- Barriers Brainstorm
- My story and the 'why' behind YESS
- Program design and delivery
- Impact and outcomes
- Interactive reflection activity
- Takeaways

MentiMeter:

- <https://www.menti.com/alizx7ifasr3>



menti.com
3951 1096



Complexity in Youth Employment



My Why

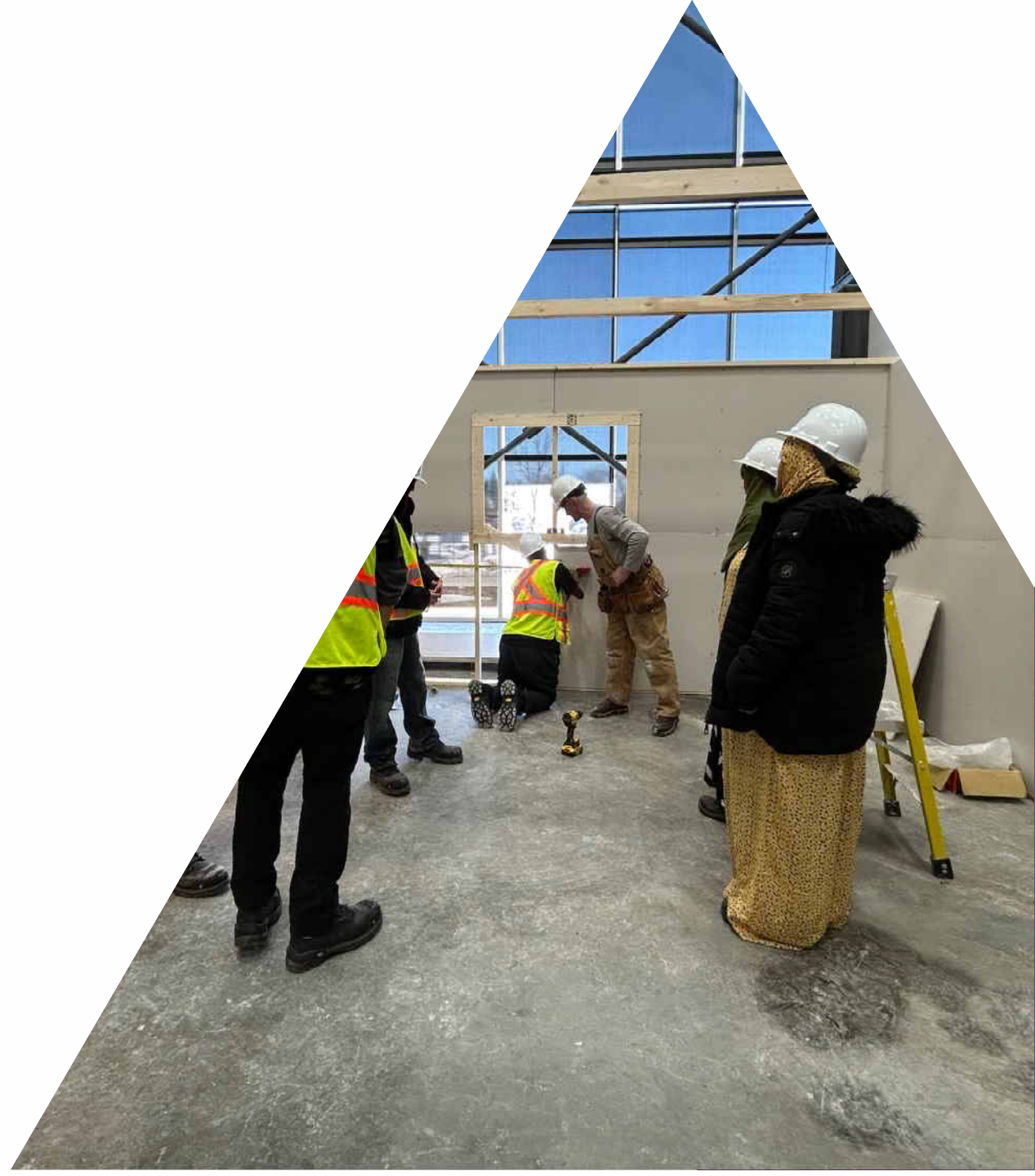
- **Key Components:**
- Classroom Learning: Communication, goal setting, financial literacy, digital skills.
- Hands-On Trades Exposure: Drywalling and mini-trades days.
- Health and Life Skills: Nutrition, stress management, healthy relationships.
- Employment Prep: Resumes, mock interviews, employment boosting certifications like WHIMIS, Food Safe and Emergency First Aid, job placements.
- Follow-Up Support: Continued mentorship, check-ins, and troubleshooting barriers.



YESS Overview

Why It Works

- It's youth-led and real-world informed.
- It's adaptable and accessible.
- It's community driven.





Indigenous Partnerships

Program Outcomes

After 2 years: (according to a follow up 12-weeks after program completion)

63 youth served

- **20 youth are employed or self-employed**
- **9 youth who returned to school or formal training**
- **2 youth who will enroll in employment services programming**
- **21 youth neither employed nor returned to school**
- **63 participants will have started and 46 completed**

Employment Services and Employment Skills Training

- **46 participants will have started and 41 completed**

Accredited Skills Training

- **34 participants will have completed a Quality Employment**

Opportunity

Demographics:

- 63 youth furthest from employment served
- 63 youth from YESS designated equity communities served
 - 55 Indigenous youth served
 - 7 racialized youth served
 - 17 youth with disabilities served
 - 8 youth identifying as 2SLGBTQI+ served
- 27 youth living in rural, remote, northern, or fly-in communities served
 - 5 newcomer youth served

Success Story 1



Success Story 2





Lessons Learned

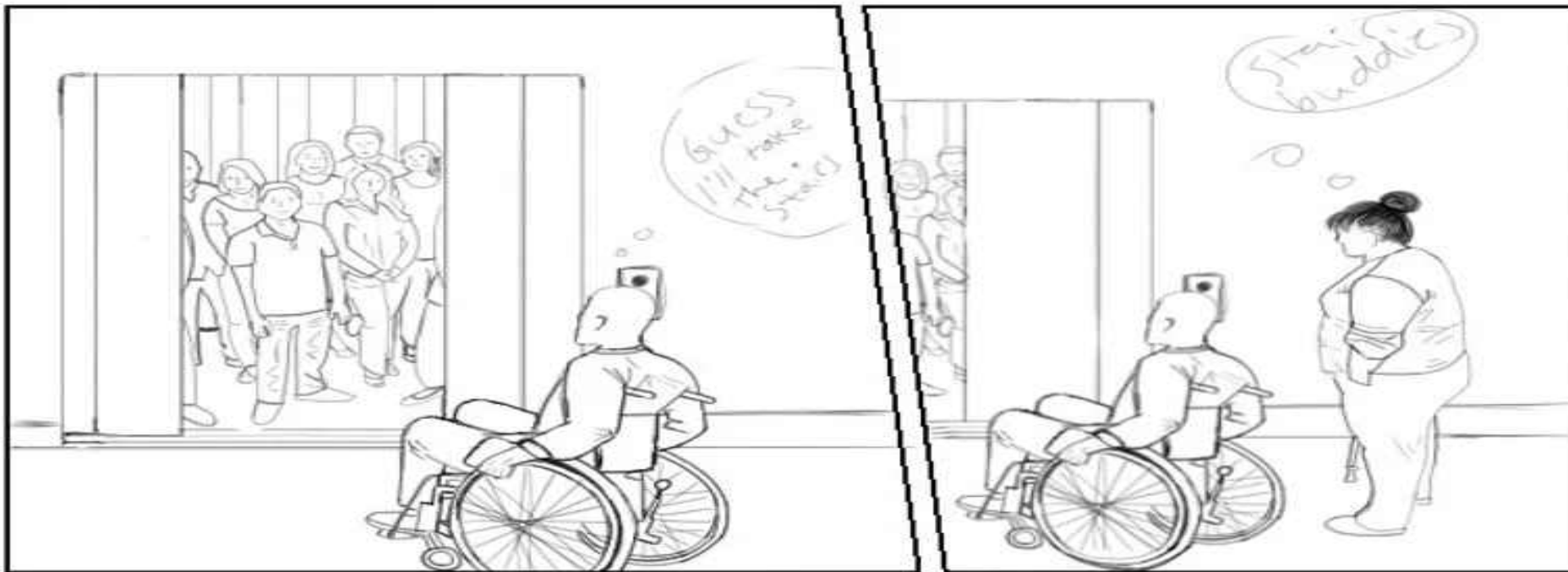
What are barriers?



- Image source: <https://blog.evenbreak.co.uk/2019/03/20/how-important-is-language/>

How do we address barriers?

Image:
Elevator
mood by
CutesyBells



Ronan 2011

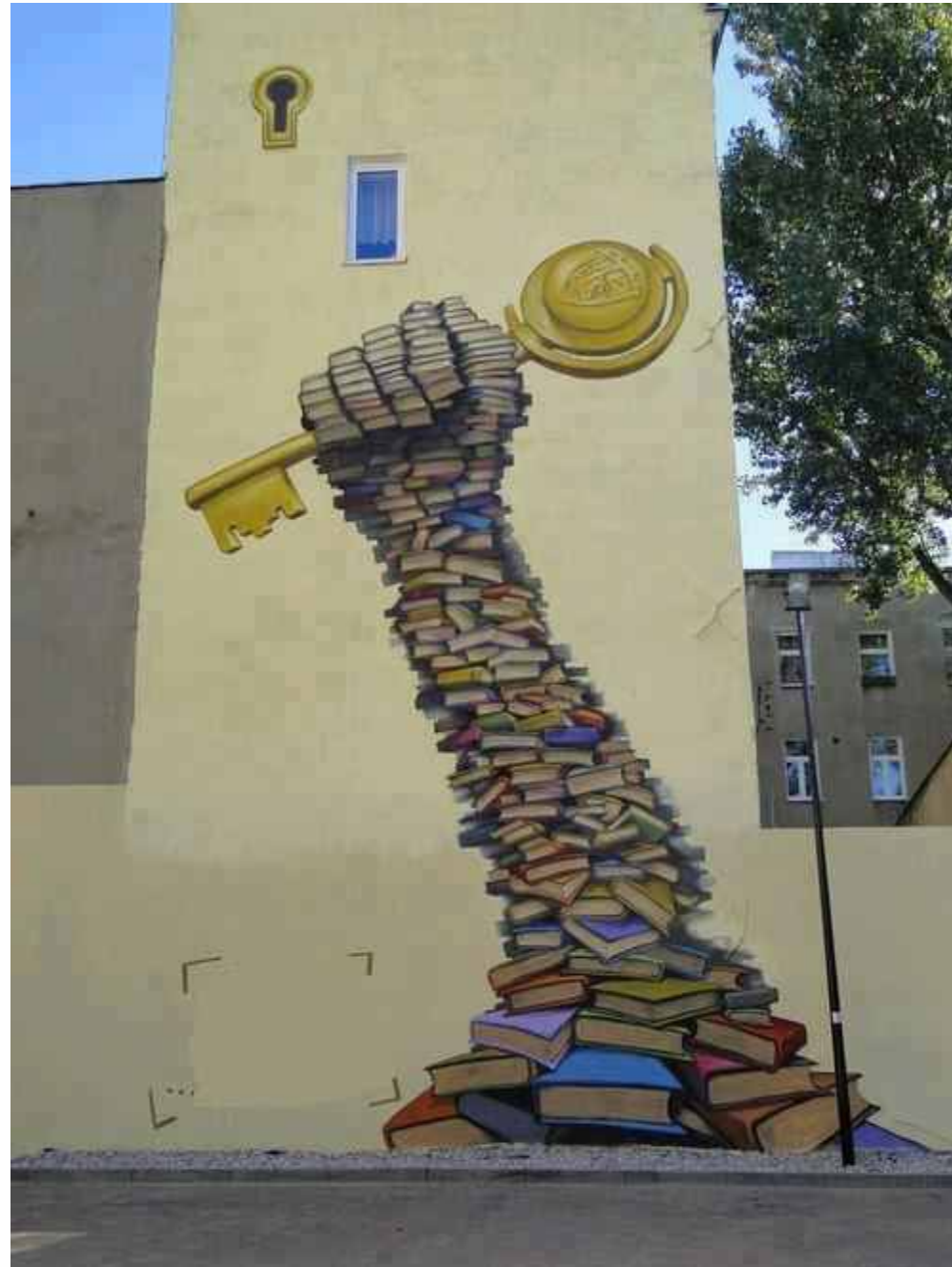
Applying lived experience



Art Reflection – Building a Community Mosaic

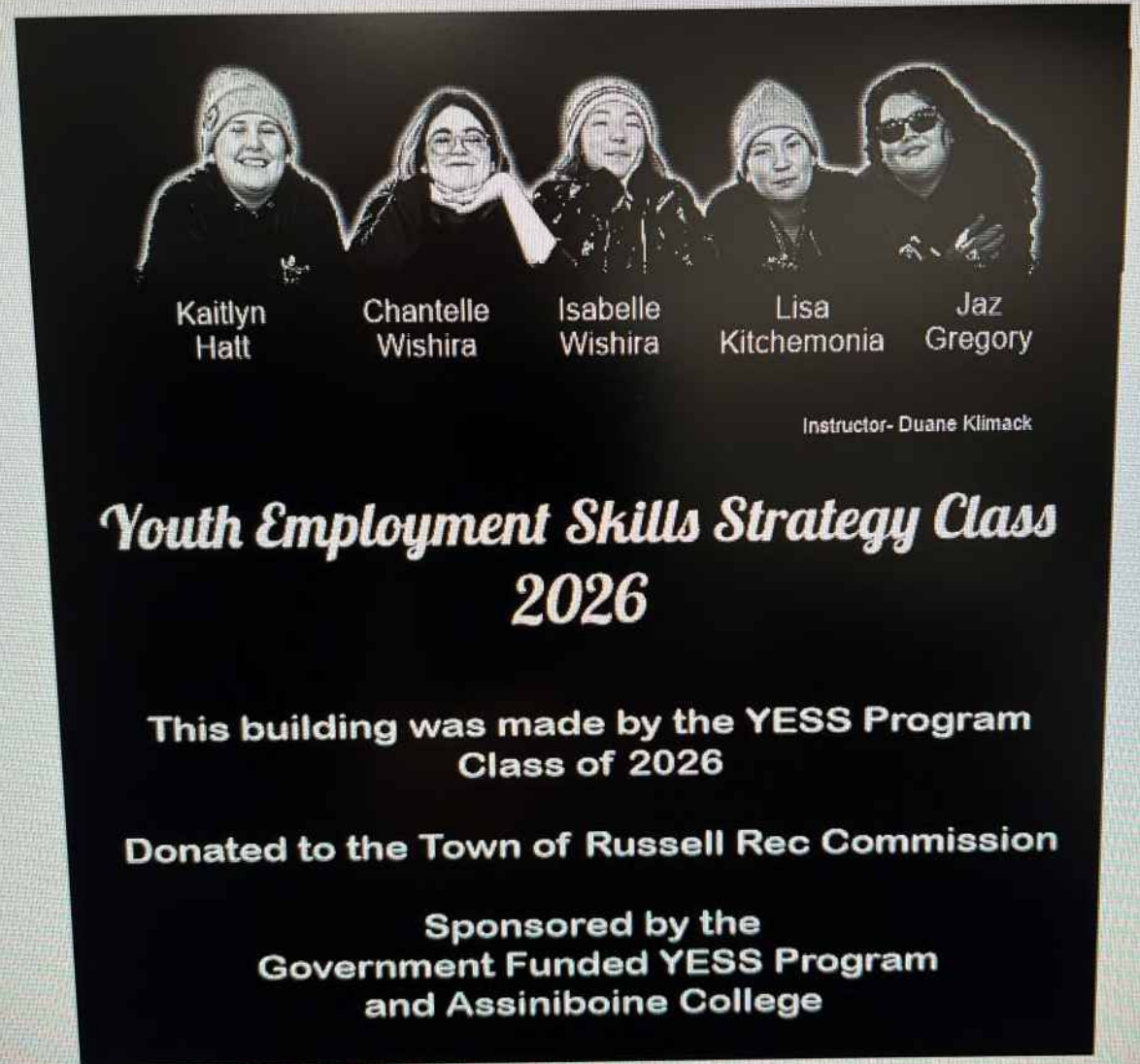


Together, we create
a visual of what
inclusive education
can look like;
interconnected and
human.



Pathways Forward

- Co-design with learners.
- Integrate flexible supports.
- Build cultural and health literacy into CE programming.
- Celebrate small wins that lead to big change.



THANK YOU!



EVERYDAYIDERP.TUMBLR.COM



Assiniboine
College

Ashley Anderson

Assiniboine College
andersona15@assiniboine.net

