

# Mobilizing a Nation: Continuing Education as Canada's Engine for Readiness and Resilience

*How continuing education units can  
operationalize community resilience through  
flexible, place-based learning pathways*

**Dr. Zoe MacLeod & Dr. Sarah Wolfe**  
Royal Roads University

WELCOME TO  
**CLIMATE  
CHANGE**

**Flood** 

 **Drought**

# Why This Matters Now

## Canada faces growing disruption

- Climate emergencies
- Infrastructure fragility
- Supply chain instability
- Foreign interference and geopolitical uncertainty
- Public systems under strain

## The challenge

Canada needs more people prepared to contribute meaningfully to community resilience.



# The Readiness Gap

## Communities Need

Rapid skill development  
Flexible participation  
Applied readiness  
Regional responsiveness  
Community partnerships

## Traditional Systems Often Provide

Slow academic cycles  
Rigid program structures  
Theory-heavy programming  
Centralized design  
Institutional silos

***CE is uniquely positioned to bridge this gap!***

# Reality

Universities are being asked to think differently about...



**Who they  
serve**



**How quickly  
they can  
respond**



**What societal  
roles they can  
play**

# Our Position

## CE is not simply a support function

### CE can act as:

- A translator of public need in learning
- A rapid-response education platform
- A connector across sectors
- A builder of regional resilience capacity

**We present two arguments...**





## Argument 1: CE can translate concepts into practical learning

- Short applied learning
- Stackable micro-credentials
- Community-based skill development
- Entry points for non-traditional learners

### Potential learners:

- Youth
- Public servants
- Reservists
- Volunteers
- Newcomers
- Retirees
- Community leaders

# From Interest to Community Capability



**Community  
Need**



**Short Applied  
Courses**



**Micro-  
Credentials**



**Stackable  
Credentials**



**Regional Preparedness Capacity**



## Argument 2: Readiness should be organized regionally

**Different regions face different realities:**

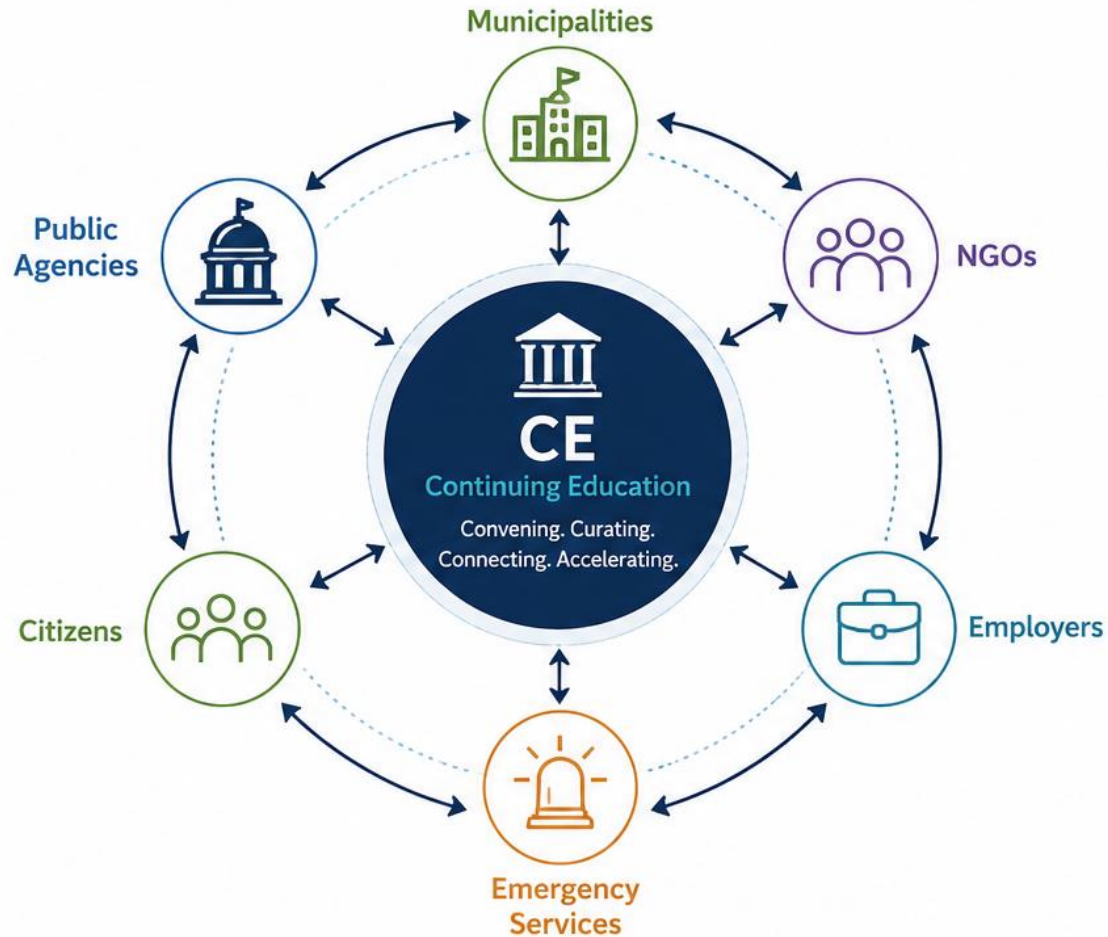
- Wildfires and Flooding
- Earthquake risk
- Energy disruption
- Coastal vulnerability
- Remote access challenges
- Economic instability

***Therefore...***

**Training should  
emerge from local  
risk landscapes  
and community  
ecosystems**

# CE AS COMMUNITY INFRASTRUCTURE

Strengthening the ecosystem. Building collective readiness.



## CE CAN FUNCTION AS:



### CONVENER

Bringing people and partners together.



### CURATOR

Identifying and validating quality learning and resources.



### CONNECTOR

Linking organizations, programs, and learners.



### ACCELERATOR

Enabling action, scaling impact, and building capacity.



CE does not need to own all delivery.



CE can coordinate capability across a region.



**Stronger together. Better prepared. More resilient communities.**

CE as the connective tissue that powers local and regional readiness.

# What Could this Look Like in Practice?

## Island Ready: A Community Resilience Learning Hub

A regionalized, partnership-based ecosystem

*This is presented not as a finished solution, but as an example of how CE might operationalize a regional resilience model.*



# Why Vancouver Island?

## Southern Vancouver Island Faces:

- Earthquake risk
- Tsunami risk
- Wildfire smoke
- Supply chain disruption
- Power outages
- Coastal vulnerability

## *Opportunity:*

A regionalized, partnership-based resilience learning ecosystem.

# HUB AND SPOKE MODEL



# THE HUB

## Potential responsibilities include:

- Partnership coordination
- Learner registration and experience
- Credentialing and stackability
- Quality assurance
- Public engagement
- Regional awareness building
- Shared communications

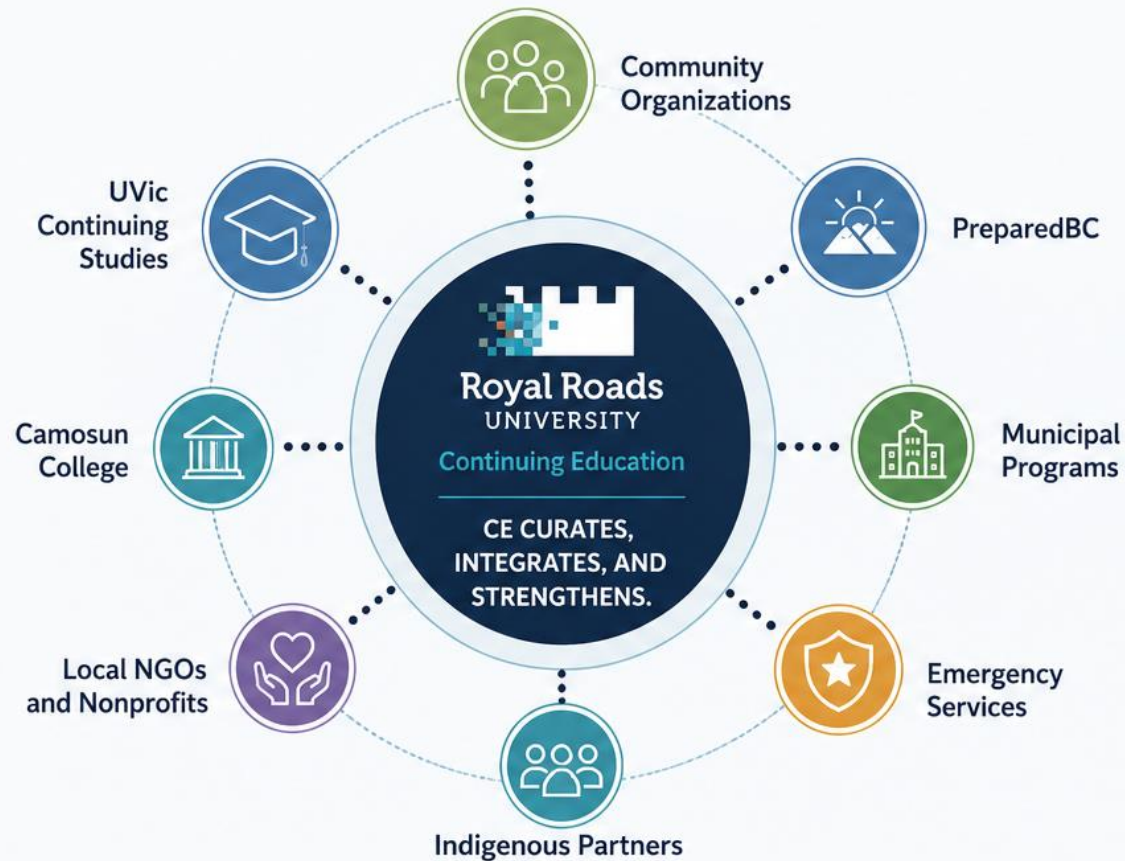
## Example Learning Streams

Short, applied, community-oriented learning

- First Aid and CPR
- Household Preparedness
- Crisis Communication
- Community Coordination
- Navigation and Wayfinding
- Drone Operations
- Emergency Project Management

# BUILD FROM EXISTING CAPACITY

Stronger together. More impact. Less duplication.



## CE SHOULD:



**Curate** before creating



**Integrate** before duplicating



**Strengthen** existing ecosystems

## POTENTIAL REGIONAL PARTNERS MIGHT INCLUDE:

- UVic Continuing Studies
- Camosun College
- PreparedBC
- Municipal programs
- Community organizations



**Build on what's already strong.**

Connect. Coordinate. Empower Communities.



A collaborative ecosystem creates greater readiness and resilience.

# YOUR TURN

## Interactive discussion

### Community Ready: Your Region

1. What is your region's greatest resilience challenge?
2. What skills are currently missing?
3. Who already provides related training?
4. Where could CE play a coordinating role?

# Key Takeaways

## Continuing Education can:

- Translate resilience needs into learning pathways
- Build regional partnership ecosystems
- Create stackable, mission-oriented education
- Serve overlooked learners
- Strengthen community readiness



Thank you...



Royal Roads  
UNIVERSITY